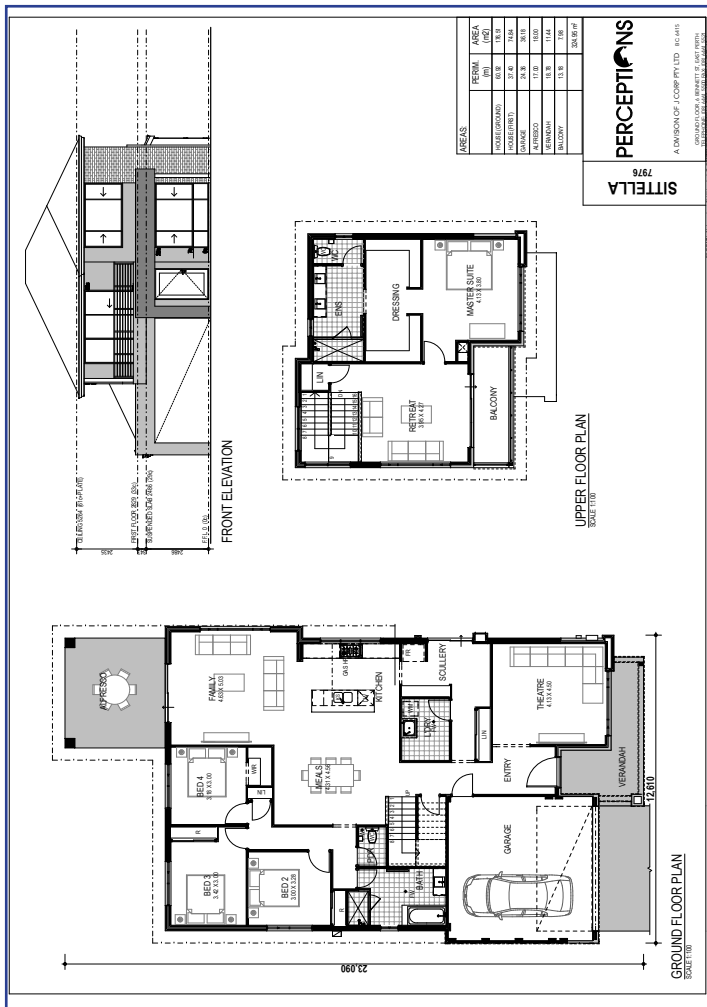


Lot 137 Crimson Road House and Land Package



Lot Size: 375sqm
Frontage: 13.5m

THE SITELLA
Price
\$521,210



Features:

- Smeg 900mm wide oven and hotplate
- Essa Stone bench tops thru out
- Caroma Quatro tapware and accessories
- Caroma Clean Flush Luna wall faced toilet suites
- Double brick construction
- Lifetime structural guarantee

Can include Reverse cycle air conditioning

Contact Robert Skipworth

M 0418 958 959

E roberts@perceptions.com.au

PERCEPTIONS

Disclaimer: Colliers International does not guarantee, warrant or represent that the information contained in this advertising and marketing document is correct. Any interested parties should make their own enquiries as to the accuracy of the information. We exclude all inferred or implied terms, conditions and warranties arising out of this document and any liability for loss or damage arising there from.



David Gibbons
0434 650 866
david.gibbons@colliers.com
thevista.com.au

